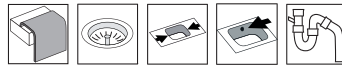
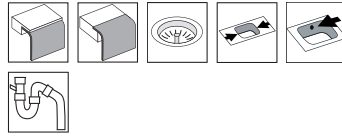


Horizon HZ615SH

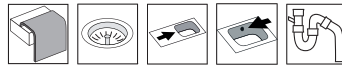
Art. no. HZ615SH
GTIN 7393069010602



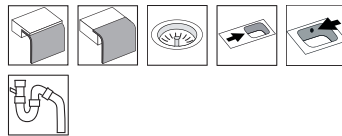
Art. no. HZ615SHF
GTIN 7393069010640



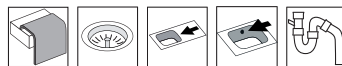
Art. no. HZ615SHR
GTIN 7393069011371



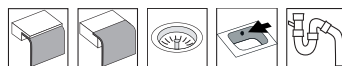
Art. no. HZ615SHRF
GTIN 7393069011395



Art. no. HZ615SHL
GTIN 7393069011333



Art. no. HZ615SHLF
GTIN 7393069011357



Cabinet size 60
Overall dimension in mm 615 x 510
Bowl dim. in mm 345 x 415 x 160
Small bowl dim. in mm 160 x 415 x 120
Cut-out dimension, inset model 594 x 468 mm
Waste hole dim. in mm 97
Waste hole placement center
Material EN 1.4301, AISI 304, SS2333
Material thickness in mm 0,7
Pcs per pallet 22
Design OddThorsen

Description
Reversible kitchen sink for inset, under- or flushmounting. Delivers with basket wastes, overflow in one bowl, tap hole cover and water trap.

Separate article number for under/flushmounting: HZ615SHF
Also available with one taphole only (sink right or left)

Optional

