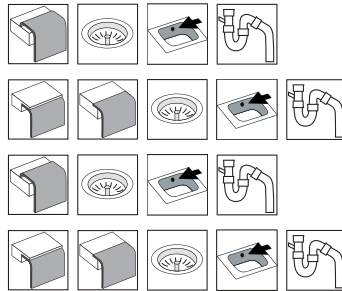


Horizon HZ815D

Art. no.	HZ815D
GTIN	7393069010626
Art. no.	HZ815DF
GTIN	7393069010664
Art. no.	HZ815DM
GTIN	7393069011616
Art. no.	HZ815DMF
GTIN	7393069011593



Cabinet size	80
Overall dimension in mm	815 x 510
Bowl dim. in mm	345 x 415 x 160
Small bowl dim. in mm	345 x 415 x 160
Cut-out dimension, inset model	794 x 468
Waste hole dim. in mm	97
Waste hole placement	center
Material	EN 1.4301, AISI 304, SS2333
Material thickness in mm	0,7
Pcs per pallet	17
Design	OddThorsen

Description

Reversible kitchen sink with two big bowls for inset, under- or flushmounting. Delivers with basket wastes, overflow in one bowl, tap hole cover and water trap.

Separate article number for under/flushmounting:
HZ815DF

Also available with one taphole

Optional

