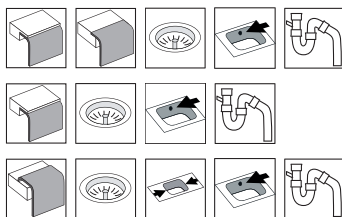


# Frame FR520

<b>Art. no.</b>	FR520F
<b>GTIN</b>	7393069023527
<b>Art. no.</b>	FR520-10
<b>GTIN</b>	7393069023497
<b>Art. no.</b>	FR520NF
<b>GTIN</b>	7393069023589



<b>Cabinet size</b>	60
<b>Overall dimension in mm</b>	566 x 426 x 180
<b>Bowl dim. in mm</b>	520 x 380 x 180
<b>Waste hole dim. in mm</b>	97
<b>Material</b>	EN 1.4301, AISI 304, SS2333
<b>Material thickness in mm</b>	0,9
<b>Gross weight in kg</b>	5.00
<b>Net weight in kg</b>	4.20
<b>Pcs per pallet</b>	21
<b>Design</b>	Halvor Thorsen/ Martin Krafft

## Description

Bowl for inset, under- or flush mount. The firm lines and the rounded corners (R25) gives a modern and harmonious expression. Delivers with overflow, basket waste, and water trap.

OBS! Model for under mount with a smaller rim (10mm) has its own article nr: FR520-10

Optional

