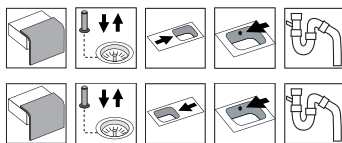


# Frame FR97D

**Art. no.** FR97DRF  
**GTIN** 7393069014112

**Art. no.** FR97DLF  
**GTIN** 7393069014136



**Cabinet size** 80  
**Overall dimension in mm** 970 x 510  
**Bowl dim. in mm** 340 x 380 x 160  
**Small bowl dim. in mm** 340 x 380 x 160  
**Cut-out dimension, inset model** 950 x 490  
**Waste hole dim. in mm** 97  
**Waste hole placement** upper center  
**Material** EN 1.4301, AISI 304, SS2333

**Material thickness in mm** 0,9  
**Net weight in kg** 7.30  
**Pcs per pallet** 10  
**Design** Halvor Thorsen/ Martin Krafft

## Description

Inset sink with universal flange, for inset, under- and flush mount, with 2 bowls. The firm lines and the rounded corners give a modern and harmonious expression. Delivers with pop-up waste, overflow and drain grating in both bowls. Water trap, soap dispenser and rinsing basket in black plastic is included with the product.

Included Optional

