

Wash basin ED2

Art. no. ED2B
GTIN 7393069022605



Overall dimension in mm	331 x 338 x 239
Depth in mm	106
Material	AISI 304
Material thickness in mm	1,25
Installation height in mm	850
Product load in N	1000
Gross weight in kg	4.50
Pcs per pallet	30
Made in	Norway

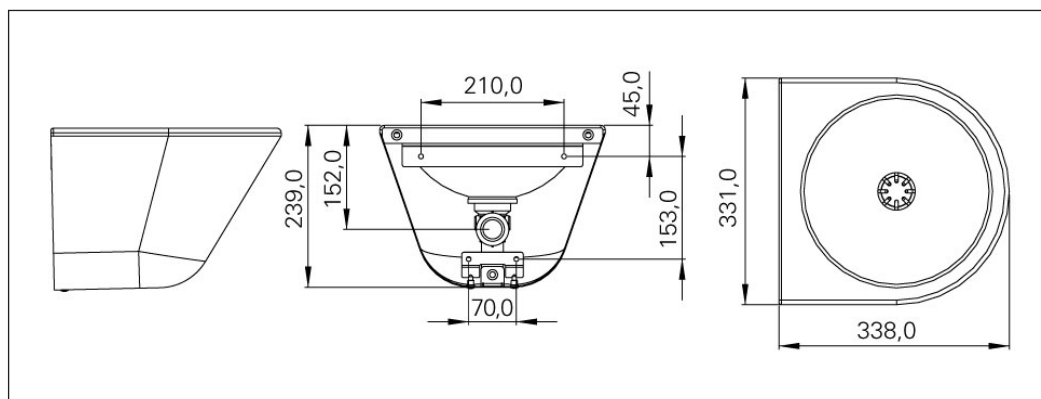
Description

Vandal resistant Hand Wash Basin in stainless steel 18/10 for bolt fixing. With closed shroud for concealed in- and outlet.

ED2B is supplied with integrated effluent valve, water trap and M10x30 bolts for affixing to the wall. Complete with vandal-proof water trap cover.

Installation

Drill three holes for M10 bolts into the wall according to the enclosed drill template. Fix the three bolts to the thread holes in the sink. Push the bolts through the holes in the wall and lock them to the wall with the enclosed nuts. Connect the water trap to the outlet.



Installation ED2

ASSEMBLY:

Included in the box:

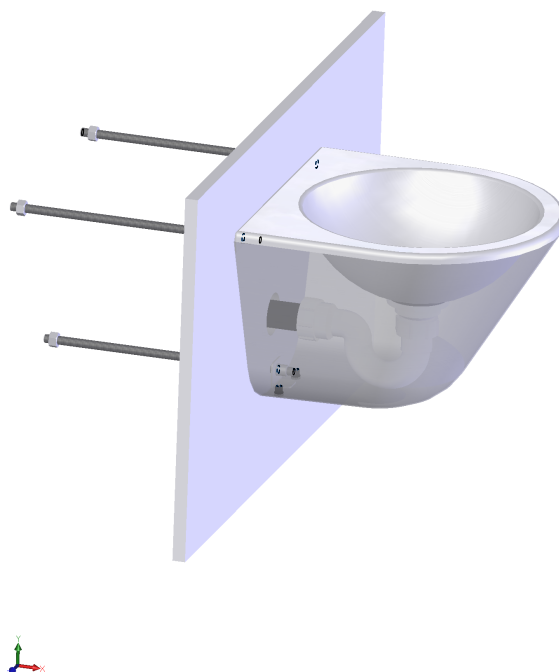
Washstand

- * Valve 1 1/4" bottom section
- * Gasket, Celleprene
- * Water trap 1 1/4" x 32 mm
- * Pipe 32 mm - 150 in length
- * Threaded rod M10
- * Hexagon nut M10 x 3
- * Assembly instructions with template

Ensure that you have all the parts before assembly begins. (A mixer tap must also be mounted on the sink before the sink is mounted on the wall, if it is not to be wall-mounted)

Attach the template to the wall at the correct height for the sink and use this to pre-drill the 3 free holes for the stud bolts.

Assemble the parts of the outlet and connect these to the washstand (the Celleprene gasket must be between valve and sink). (Mount the mixer tap onto the sink and water inlet). The 3 M10x30 mounting bolts must be affixed to the washbasin's threaded holes. The bolts are then threaded through the free holes in the wall and affixed to the wall with bundled nuts.



Maintenance ED2

SPARE PARTS:

Valve 1 1/4" bottom section: 79004
Gasket, Celleprene: 91093
Water trap 1 1/4" x 32 mm: 78088
Pipe 32 mm - 150 in length: 78090
Threaded rod M10 86149
Hexagon nut M10: 86087

Assembly instructions with template: 76272

MAINTENANCE:

INTRA PRODUCTS OF STAINLESS STEEL

In order for your Intra stainless steel product AISI304 to retain its original quality and appearance we recommend regular cleaning. Use mild soap or cleaning products specifically designed for stainless steel and clean water. Then wipe the surface with a dry cloth.

Never use detergents containing chlorine, iodine, fluoride or abrasives on stainless steel. Also avoid contact with acid solutions and other substances incompatible with stainless steel. Remember that food and skin care products may contain such

substances, e.g. ketchup, juice, salt, certain cleansers, nail polish, etc. Promptly remove spills of such products.

Observe the following:

- * Do not allow water or other liquid to dry in. This is to avoid staining the surface.
- * Even though stainless steel can withstand harsh treatment, it can easily be scratched by sharp objects. For products with normal, polished (brushed) finish, this will be very visible when the product is new, but after a period of use, this will be negated as the steel loses its lustre. For products with satin and polished finishes, the scratches will always be visible. Never use scouring powder or steel wool on stainless steel. In addition to scratching the steel, wire wool will leave behind small particles that may develop into rust spots which, over time, may corrode the steel.
- * Stainless steel must not come into contact with, or be in environments containing, chlorine solutions for long periods of time.
- * Silver polish causes stains which cannot be removed.