

Utility sink VK60S1R

Art. no. VK60S1R
GTIN 7393069022513



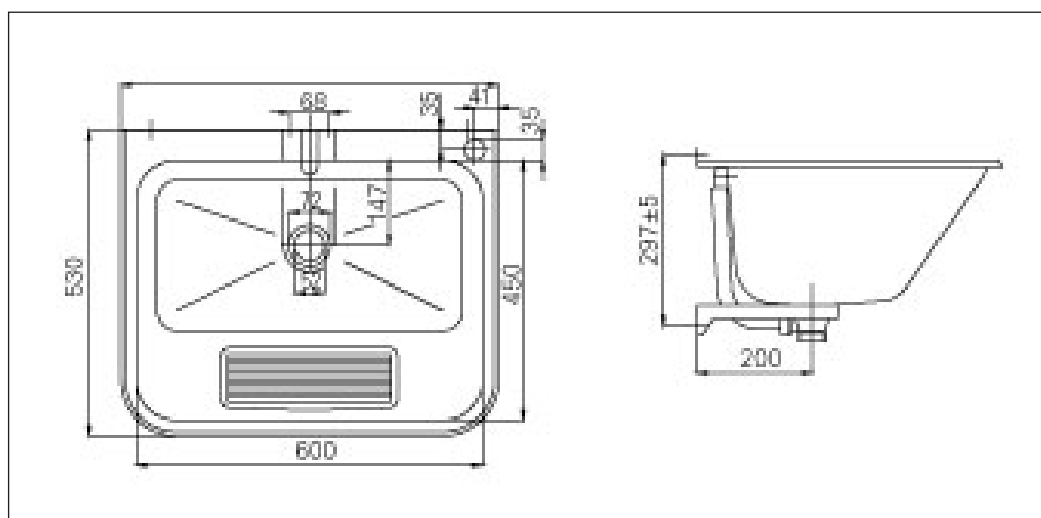
Overall dimension in mm	655 x 530 x 250
Depth in mm	250
Bowl dim. in mm	600 x 450 x 250
Waste hole dim. in mm	52
Volume in L	47
Material	AISI 304
Material thickness in mm	0,9
Installation height in mm	900
Product load in N	1000
Gross weight in kg	5.00
Weight, pallet	93.60
Pcs per pallet	14

Description

Utility sink in stainless steel for wall mounting. Including supporting bracket, backstand, taphole right hand side, waste with plug and overflow, screws and plugs.

Installation

Fix the supporting bracket, waste and overflow to the sink. Fix the sink to the wall through the two holes in the backstand and the supporting bracket.



Installation VK60S1R

ASSEMBLY:

Included in the box:

- * Utility sink
- * Equipment bag
- * Valve with overflow
- * Assembly instructions

Ensure that you have all the parts before assembly starts.

Valve with overflow and support bracket is mounted onto the utility sink.

Affix the sink to the wall using the holes in the support bracket and the fold over edge as a guide pre-drilling. Ensure you use screws that are appropriate to the material and the construction of the wall the sink is to be mounted onto.

SPARE PARTS:

Equipment bag: YUTSVK60S1
Valve 1 1/2" with overflow: 79001

INTRA PRODUCTS OF STAINLESS STEEL

In order for your Intra stainless steel product AISI304 to retain its original quality and appearance we recommend regular cleaning. Use mild soap or cleaning products specifically designed for stainless

steel and clean water. Then wipe the surface with a dry cloth.

Never use detergents containing chlorine, iodine, fluoride or abrasives on stainless steel.

Also avoid contact with acid solutions and other substances incompatible with stainless steel.

Remember that food and skin care products may contain such substances, e.g. ketchup, juice, salt, certain cleansers, nail polish, etc. Promptly remove spills of such products.

Observe the following:

- * Do not allow water or other liquid to dry in. This is to avoid staining the surface.
- * Even though stainless steel can withstand harsh treatment, it can easily be scratched by sharp objects. For products with normal, polished (brushed) finish, this will be very visible when the product is new, but after a period of use, this will be negated as the steel loses its lustre. For products with satin and polished finishes, the scratches will always be visible. Never use scouring powder or steel wool on stainless steel. In addition to scratching the steel, wire wool will leave behind small particles that may develop into rust spots which, over time, may corrode the steel.
- * Stainless steel must not come into contact with, or be in environments containing, chlorine solutions for long periods of time.
- * Silver polish causes stains which cannot be removed.