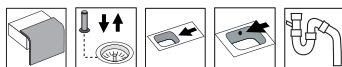


# Frame FR97SH

**Art. no.** FR97SHLF  
**GTIN** 7393069014099



<b>Cabinet size</b>	60
<b>Overall dimension in mm</b>	970 x 510
<b>Bowl dim. in mm</b>	340 x 380 x 160
<b>Small bowl dim. in mm</b>	155 x 380 x 120
<b>Cut-out dimension, inset model</b>	950 x 490
<b>Waste hole dim. in mm</b>	97
<b>Waste hole placement</b>	upper center
<b>Material</b>	EN 1.4301, AISI 304, SS2333
<b>Material thickness in mm</b>	0,9
<b>Net weight in kg</b>	8.00
<b>Pcs per pallet</b>	10
<b>Design</b>	Halvor Thorsen/ Martin Krafft

## Description

Inset sink with universal flange, for inset, under- and flush mount, with 1½ bowls and drainer. The firm lines and the rounded corners give a modern and harmonious expression. Delivers with pop-up waste, overflow and drain grating in the large bowl, and manual basket waste in the small. Water trap, soap dispenser and rinsing basket in black plastic is included with the product.

Included Optional

