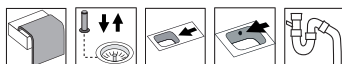


Frame FR97D

Art. no. FR97DL
GTIN 7393069014129



Cabinet size	80
Overall dimension in mm	970 x 510
Bowl dim. in mm	340 x 380 x 160
Small bowl dim. in mm	340 x 380 x 160
Cut-out dimension, inset model	950 x 490
Waste hole dim. in mm	97
Waste hole placement	upper center
Material	EN 1.4301, AISI 304, SS2333
Material thickness in mm	0,9
Net weight in kg	7.30
Pcs per pallet	10
Design	Halvor Thorsen/ Martin Krafft

Description

Kitchen sink for inset, under- or flushmounting with 2 bowls. The firm lines and the rounded corners give a modern and harmonious expression. Delivers with pop-up waste, overflow and drain grating in both bowls. Water trap, soap dispenser and rinsing basket in black plastic is included with the product.

Note! Article no. for under- and flush mount: FR97DRF/FR97DLF

Included Optional

