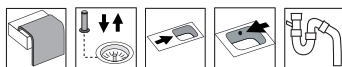


Frame FR60SH

Art. no. FR60SHR
GTIN 7393069016611
Ref. no 8020220



| | |
|---------------------------------------|-------------------------------|
| Cabinet size | 60 |
| Overall dimension in mm | 595 x 510 |
| Bowl dim. in mm | 340 x 380 x 160 |
| Small bowl dim. in mm | 155 x 380 x 120 |
| Cut-out dimension, inset model | 575 x 490 |
| Waste hole dim. in mm | 97 |
| Waste hole placement | upper center |
| Material | EN 1.4301, AISI 304, SS2333 |
| Material thickness in mm | 0,9 |
| Net weight in kg | 5.00 |
| Pcs per pallet | 18 |
| Design | Halvor Thorsen/ Martin Krafft |

Description

Kitchen sink for inset, under- or flushmounting with 1½ bowls. Large bowl to the right. The firm lines and the rounded corners give a modern and harmonious expression. Delivers with pop-up waste, overflow and drain grating in the large bowl, and manual basket waste in the small. Water trap, soap dispenser and rinsing basket in black plastic is included with the product.

Note! Article no. for under- and flushmount: FR60SHRF

Included Optional

