

Drink. fountain ED2DF

Art. no. ED2DF
GTIN 7055570014226



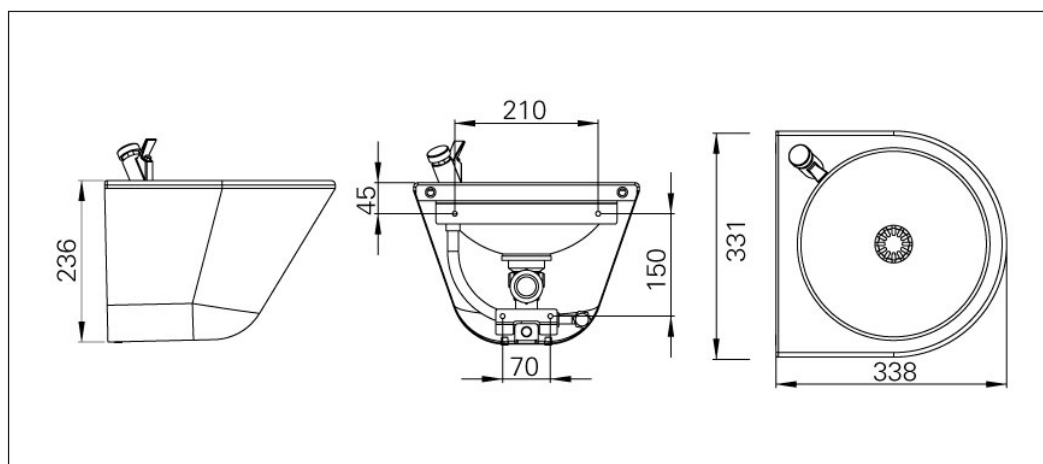
Overall dimension in mm	331 x 338 x 236
Depth in mm	106
Material	AISI 304
Material thickness in mm	1,25
Installation height in mm	900 / 700 / 500
Product load in N	1000
Gross weight in kg	4.50
Weight, pallet	106.00
Pcs per pallet	18
Made in	Norway

Description

Vandal resistant drinking fountain in stainless steel 18/10, for wall mounting. With closed shroud for concealed in- and outlet. Supplied with integrated waste, water trap water bubbler.

Installation

Fasten the top and bottom bracket to the wall according to the enclosed drill template. Fix the bubbler and connect to water. Connect the water trap to the outlet in the wall with a 32mm push fit tube (Not supplied). Fix the drinking fountain onto the top fixing bracket and lock it with the 2 headless screws to the bottom fixing to secure the fountain to the wall.



Installation ED2DF

ASSEMBLY / SPARE PARTS:

Included in the box + spare part numbers:

- * Fountain hole
- * Drink nozzle fitting: 79090
- * Male thread R1/2" -R3/8": 78099
- * Flexible hose 1/2" x 1/2" elbow: 82033
- * Fibre gasket Ø19: 79098
- * Valve 1 1/4" bottom section: 79004
- * Gasket, Celleprene Ø70: 91093
- * Water trap 1 1/4" x 32mm: 78088
- * Pipe Ø32 mm-150 in length: 78090
- * Set screw M6x25 A4: 86160
- * Suspension strip: ZED2OPP
- * Wall bracket: ZED2VF
- * Assembly kit: YMX01
- * Assembly instructions with template: 76272

Attach the template to the wall at the correct height for the sink and use this to pre-drill the holes for the suspension strip and wall bracket. Existing pipework must be flushed and cleaned before connecting the drinking fountain, so that there is no dirt in the drinking nozzle. Pipe filters which collect dirt should be mounted in the transition between the fixed piping and the flexible hose for water intake.

Install the suspension strip and wall bracket in

accordance with the accompanying drilling template. Install drinking nozzle and connect to the water supply. Connect the water trap to the outlet in the wall, hang the washstand on the suspension strip and affix it to the wall bracket with 2 set screws on the underside of the cover.

Mounting height 900 mm for adults, 700 – 800 mm for children and 500 mm for young children.

The stop valve must not be used to adjust the amount of water in the drinking nozzle, as this may cause leakage. A pressure reducing valve should reduce the water pressure to 3.5 bar.

ADJUSTING THE WATER JET:

The water flow through the drinking nozzle and the path of the water jet is adjusted with the screw on the underside of the drinking spout. This is accomplished by pressing the shutter release while the screw is adjusted.

The screw is very small, so it must be screwed very carefully so that the screw does not come out.

- Turn the screw clockwise and the water flow is reduced.

- Turn the screw anti-clockwise and the water flow is increased.



Maintenance ED2DF

SPARE PARTS:
 (See ASSEMBLY)

TECHNICAL INFORMATION:

Drinking nozzle:
 Max. working pressure: 5.5 bar
 Min. working pressure: 0.5 bar
 Recommended working pressure: 3.5 bar

Connection to water:
 The amount of water must not be restricted with a shut-off valve, as this may cause leaks from the drinking nozzle.

SERVICING IN THE EVENT OF LEAKS:

Leaks by the spout of the drinking nozzle: may be caused by a damaged O-ring or dirt under O-ring JR2: Clean piston P312U included in KBP311N.

Apply some grease around the piston before assembly. If the O ring JR2 is damaged, the entire drink nozzle should be replaced.

Leakage under the pressure button: most likely caused by a damaged or dirty O-ring, JR1: Clean the piston P312U included in KBP311N.

Apply some grease around the piston before assembly. If the O ring JR1 is damaged, the entire drink nozzle should be replaced.

MAINTENANCE:

In order for the product to retain its original quality and appearance, regular cleaning is recommended. Use mild soap or products specifically designed for stainless steel and clean water. Then wipe the surface with a dry cloth.

Never use detergents containing chlorine, iodine, fluoride or abrasives. Also avoid contact with acidic solutions and other substances incompatible with stainless steel. Remember that foodstuffs and skin care products may contain such substances; e.g. ketchup, juice, salt, some cleansers, nail polish, etc. Promptly remove spills of such products.

* Do not allow water or other liquid to dry in. This is to avoid staining the surface.

* Even though stainless steel can withstand harsh treatment, it will easily be scratched by sharp objects. For products with polished (brushed) finishes, this will be very visible when the product is new, but after a period of use, this will be negated as the steel loses

