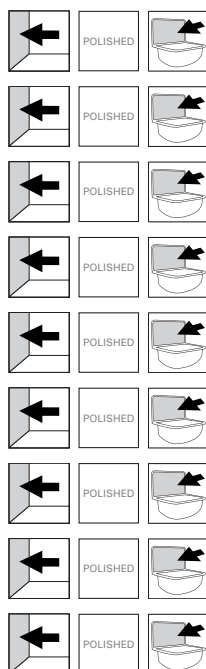


# Wash trough P3

<b>Art. no.</b>	P3-FLEX
<b>GTIN</b>	8719585005349
<b>Art. no.</b>	P3-600
<b>GTIN</b>	8719585005028
<b>Art. no.</b>	P3-1200
<b>GTIN</b>	8719585005035
<b>Art. no.</b>	P3-1500
<b>GTIN</b>	8719585005042
<b>Art. no.</b>	P3-1800
<b>GTIN</b>	8719585005059
<b>Art. no.</b>	P3-2100
<b>GTIN</b>	8719585005066
<b>Art. no.</b>	P3-2400
<b>GTIN</b>	8719585005073
<b>Art. no.</b>	P3-2800
<b>GTIN</b>	8719585005080
<b>Art. no.</b>	P3-3000
<b>GTIN</b>	8719585005097



<b>Overall dimension in mm</b>	600-3000 x 474 x 436
<b>Outlet dimension in mm</b>	1 1/2"
<b>Material</b>	Stainless steel 18/10, AISI304, 1.4301
<b>Material thickness in mm</b>	1 / 1,5
<b>Installation height in mm</b>	500/800/900

## Description

Flexible wash trough supplied with integrated wall brackets.

Inner corners with more than 90° angle, and pressed drain without screws and gasket ensure optimum hygiene and easy cleaning. The sink has a fall against the drain in the center. Soft transitions at all external angles counteract damage in the event of a fall against the trough. Safe and comfortable handle support at the bottom of the edges to prevent injury during assembly. The bowl has enough depth to accommodate a bucket.

Meets all requirements in EN 14296.

Washtroughs available in standard lengths 600, 1200, 1500, 1800, 2100, 2400, 2800 and 3000 mm.

Washtroughs also available in any customer specified length between 600 and 3000. Art. Nr: P3-Flex

