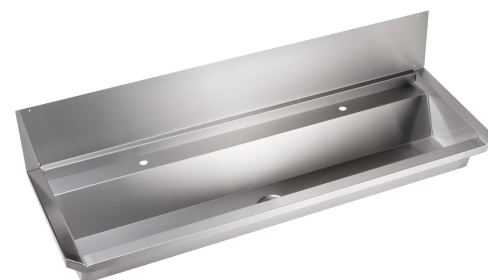
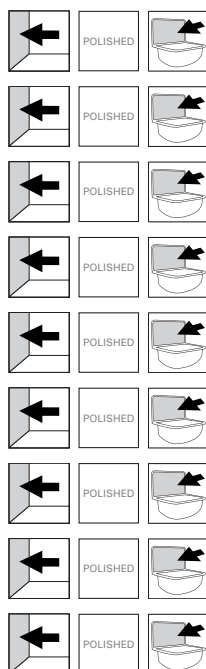


# Wash trough P7

Art. no.	P7-FLEX
GTIN	8719585005363
Art. no.	P7-600
GTIN	8719585005189
Art. no.	P7-1200
GTIN	8719585005196
Art. no.	P7-1500
GTIN	8719585005202
Art. no.	P7-1800
GTIN	8719585005219
Art. no.	P7-2100
GTIN	8719585005226
Art. no.	P7-2400
GTIN	8719585005233
Art. no.	P7-2800
GTIN	8719585005240
Art. no.	P7-3000
GTIN	8719585005257



Overall dimension in mm	600-3000 x 395 x 348
Outlet dimension in mm	1 1/2"
Material	Stainless steel 18/10, AISI304, 1.4301
Material thickness in mm	1 / 1,5
Installation height in mm	500/800/900

## Description

Flexible wash trough supplied with integrated wall brackets. Inner corners with more than 90° angle, and pressed drain without screws and gasket ensure optimum hygiene and easy cleaning. The bowl has a fall against the drain in the center. Soft transitions at all external angles counteract damage in the event of a fall against the trough. Safe and comfortable handle support at the bottom of the edges to prevent damage during assembly.

Meets all requirements in EN 14296.

Washtroughs available in standard lengths 600, 1200, 1500, 1800, 2100, 2400, 2800 and 3000 mm.

Washtroughs also available in any customer specified length between 600 and 3000. Art. Nr: P7-Flex

