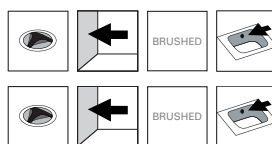


# Utility sink TempraWall50S1

**Art. no.** TEMPRA50S1  
**GTIN** 8719585006421  
**Art. no.** TEMPRA50S1R  
**GTIN** 8719585007565



<b>Overall dimension in mm</b>	550 x 450 x 270
<b>Depth in mm</b>	230
<b>Bowl dim. in mm</b>	500 x 400 x 230
<b>Waste hole dim. in mm</b>	52
<b>Volume in L</b>	34
<b>Material</b>	AISI 304
<b>Material thickness in mm</b>	1,2
<b>Installation height in mm</b>	900
<b>Product load in N</b>	1500
<b>Gross weight in kg</b>	4.50
<b>Net weight in kg</b>	3.20
<b>Weight, pallet</b>	101.00
<b>Pcs per pallet</b>	20

## Description

Utility sink in stainless steel for wall mounting. Including supporting bracket, backstand, waste with plug and overflow, screws and plugs.

Tempra50S1 without taphole.  
 Tempra50S1R with taphole to the right.

## Installation

Fix the supporting bracket, waste and overflow to the sink. Fix the sink to the wall through the two holes in the backstand and the supporting bracket.

