

# Accessory SD

**Art. no.** SD  
**GTIN** 5708563008222



## Description

Soap dispenser in chrome plated brass - with plastic bottle for soap. Refilling of soap to be done from top.

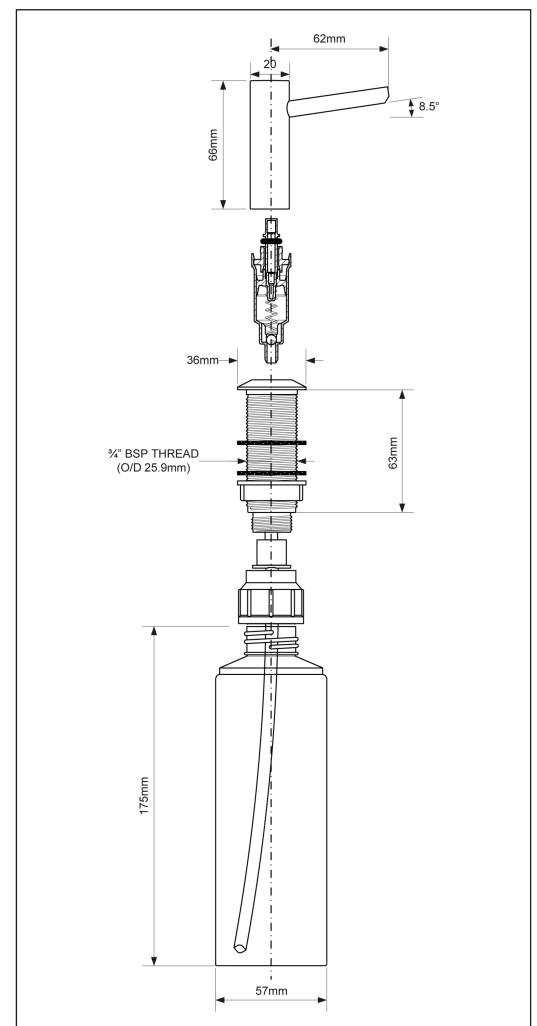
Hole in countertop to be 27mm.

**SD**  
Bottle 175 x 57 mm  
Pump 66 x 72 mm  
Spout 52 mm

**SD-LONG**  
Bottle 230 x 57 mm  
Pump 65,5 x 103 mm  
Spout 83 mm

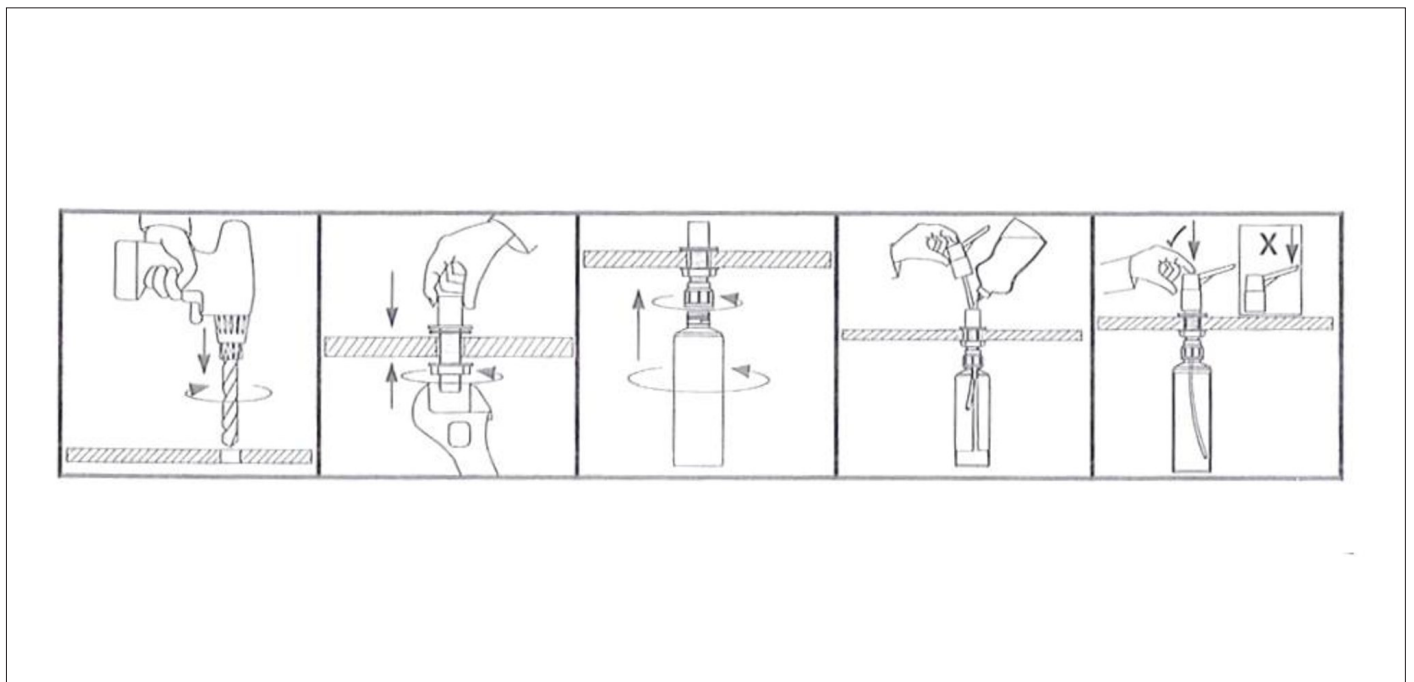
If the detergent is viscous, mix it with 50% water.  
Avoid the detergent ZALO as it is viscous and can cause blockages.

**Overall dimension in mm** 175x57 + 66x72



# Installation SD

See instructions at the bottom of pg.



# Maintenance SD

## Care instructions

Lift the pump handle out of the bottle.

2. Rinse the pump under running hot water. Remove coagulated detergent residues.

3. Fill a bowl with warm water.

4. Place the pipe in the water and pump hot water through the pipe and the dispenser.

5. Continue to pump hot water through the pump dispenser until the water flows freely through the spout so that coagulated detergent does not block the water flow.

dispenser that is not cleaned as described is not covered by the warranty in the event of corrosion or stoppage. Always add detergent from above, without unscrewing the bottle underneath. To avoid vacuum, use a funnel when filling and do not fill with detergent all the way to the top.

If the detergent is viscous, mix it with 50% water. Avoid the detergent ZALO as it is viscous and can cause blockages.

We recommend that you do this cleaning regularly. A