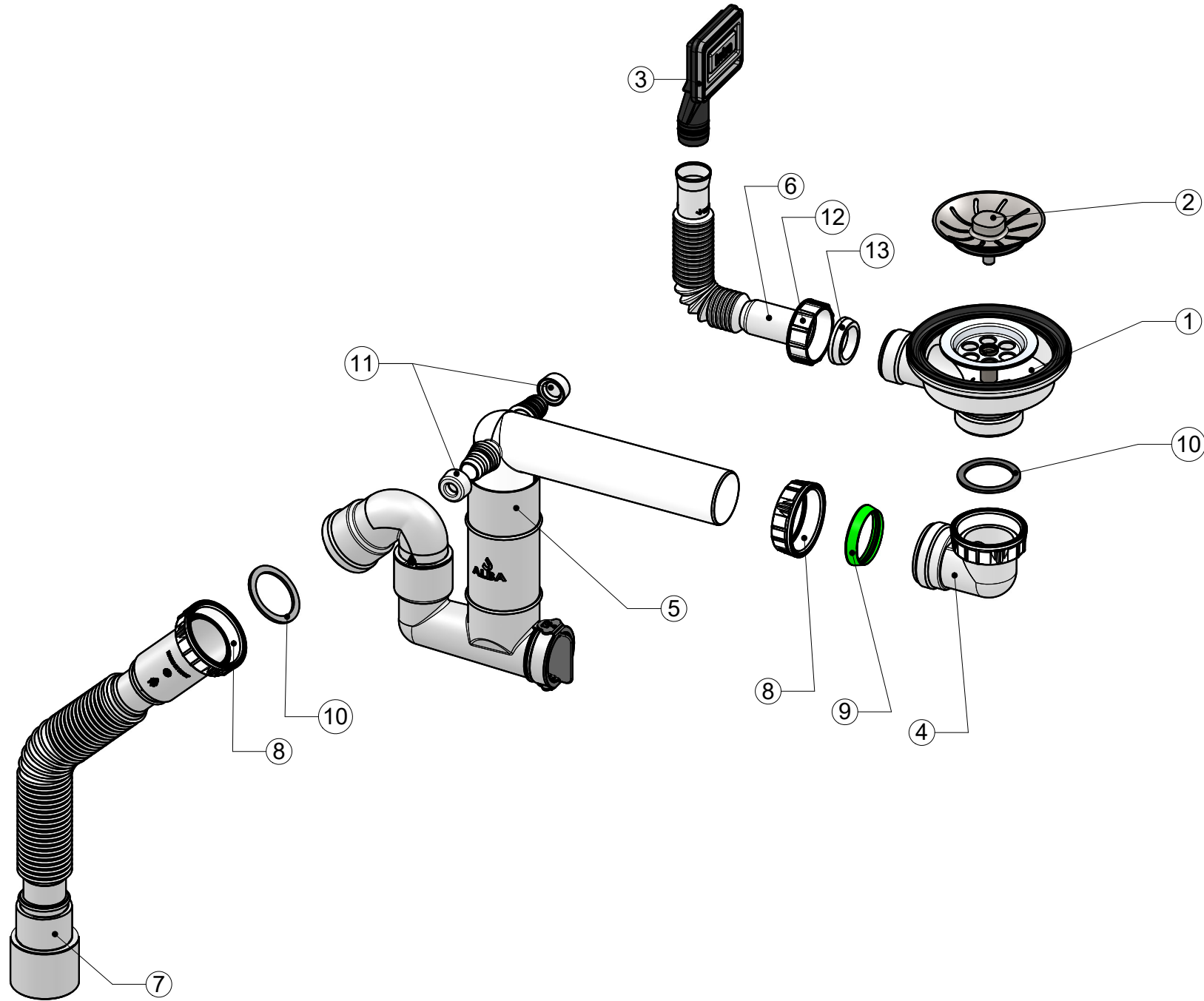

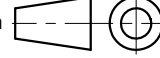


ALBA S.r.l.
15/06/2023
ac



Bill of materials							
Pos.	Drawing	Code	Q.tà	Denomination	Material	Colour	Treatment
1	10016	AB0CA1282R	1	Assembled waste fitting open S5000		White	
2	10615	AB0CA1409R	1	Assembled strainer basket integral square knob Teka manual			
3	06215	AB0CA1124R	1	Overflow INTRA (Teka)			
4	08832	AB0CA1079R	1	L fitting with nut 1-1/2" basket bowl connection		White	
5	10638	AB0CA1418R	1	Preassembled MODÚ siphon 1 way			
6	09021	AB0AQ0592R	1	Stretchable for overflow L.155-320	PP	White	
7	06462	AB0ST0264R	1	Extensible pipe 1-1/2" DN40-DN50			
8	00005	AB0ST0068R	2	Open nut G 1-1/2"	PP	White	
9	00064	AB0ST0092R	1	Conical washer DN40 plastic	PE LD GR70	Green	
10	00133	AB0AQ0115R	2	Flat gasket 1-1/2" DN40 sp.2	PVC 70Sh	Grey	
11	00348	AB0AQ0211R	2	Stopper for washing-machine pipe	PVC 70Sh	White	
12	00027	AB0ST0071R	1	Nut G 1-1/8" DN30	PP	White	
13	00065	AB0AQ0076R	1	Conical washer DN21 for flex pipe	PVC 70Sh	White	
14	PVP003390	PVP003390	1	Assembling instructions			
15	00895	FITP00004	1	Plastic bag	PE LD		
16	00886	AB0ZZ4499R	1	Label	Label		

	Drawn	Date	Signature	Customer code
	Approved	29/05/2023	CESARENI	90101382
Critical dimension or feature 				Commercial code
General tolerance UNI EN 22768 m L				90101382
Scale 1:4 (A3)				Drawing No
Waste fitting 1W manual 90101382 INTRA				PVA002575
				Code
				PVA002575
				Revision
				00